

FISHING CRUISE EXPEDITION 2005/ 2006

Seychelles 'Far and Away' - Aldabra Archipelago

The long distance travel and living aboard a mothership makes this a fishing adventure for the adventurous. But with our expert crew aboard the best ship in the Seychelles- this will be some of the finest fishing you will ever experience!

8 days

Fully inclusive fishing safari.
Unlimited fishing and use of all water sports equipment.

Day 1:

Depart Mahe on flight to Assumption. Arrive on Assumption and transfer to the Mieke and set sail for Cosmoledo 6 - 8 hours away. Arrive at Cosmoledo late in the evening.

Day 2 – Day 7:

Fish every day. The fishing spots will be decided the evening before between clients and guides. These decisions will be made depending on the tides and species of fish the client's wish to target.

Evening of day 7:

After dinner we set sailing for Assumption, arriving early the next day morning.

Day 8:

Morning can be spent bluewater fishing at Assumption or snorkelling before departing for Mahe at 13:00

Like most fishermen you have probably dreamt of that once-in-a-lifetime fishing trip, exploring exotic destinations that have never been fished before, that surround some far-off tropical island with no sign on another person, where you can walk undisturbed on deserted snow white beaches and sail across a warm ocean day after day, never seeing another vessel. Well this is your chance!

The Seychelles flats are fishing grounds where the fish are virtually undisturbed. It is as close to a virgin fishing ground as can you can get and without doubt should be on your "must do" wish list.

The flats around the various atolls of the Seychelles offer fly anglers some of the most exciting saltwater fly-fishing they are ever likely to encounter. A variety of species inhabit the flats around the remote atolls, including trophy size bonefish, various trevally species including the ferocious Giant Trevally the finicky Indo Pacific Permit and a host of triggerfish species. In addition to Bonefish, Permit, Trevally and Triggerfish the flats of the Seychelles also supports and some of the biggest milkfish you'll ever see. Don't forget the bluewater where you can fish for sailfish, baracuda, dogtooth tuna, wahoo, yellowfin and dorado.





DiveWild invites you to join our Seychelles 'Far and Away' Fishing expeditions visiting the rarely visited outer islands of the Seychelles archipelago – the Aldabra island groups.

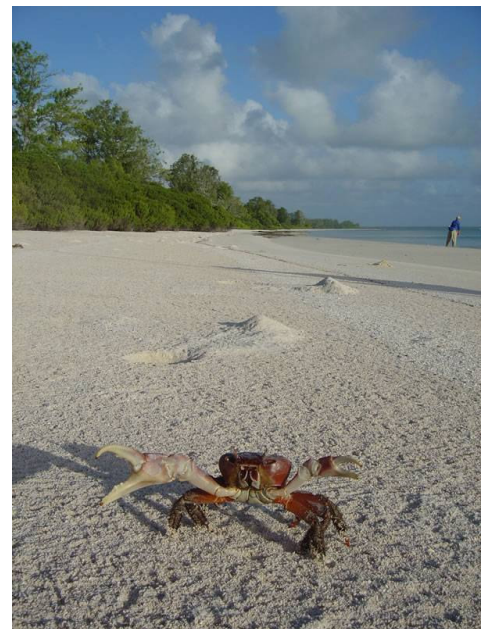
Among the remotest of the Seychelles archipelago and closest of all the islands to Africa these are the least accessible and seldom visited. These islands offer no accommodation and are only accessible by charter yacht. Consequently these islands offer pristine untouched and largely unfished reefs with beautiful protected lagoons and atolls where the fishing is unsurpassed.

Our main fishing grounds will be around the islands of Cosmoledo. Cosmoledo is a long chain of islands encircling a great central lagoon which is home to double-digit bonefish and is also referred to as Earth's giant Trevally headquarters.

Abundant white sand flats hold Bonefish galore eager to take a fly. Some flats hold turtle grass and add more challenge to the game, giving anglers contrast as fish slip from dark to light. Giant Trevally, big Bonefish, Milkfish, Trevally, Permit and shark also lurk here. There is plenty of fishing to do for many blue water species as well, with the constant presence of Sailfish, Yellow Fin Tuna, and Wahoo that rarely, if ever, get fished.

Later in the day, when you are all fished out go ashore or explore the reefs with snorkel, bbq on the ships decks or enjoy the countless other water sports available on board, from wake boarding to kayaking and windsurfing and scuba diving

This really is a very special place and our 'Far and Away' expedition will be the best way to experience it by far!



MOTHERSHIP – YACHT MIEKE

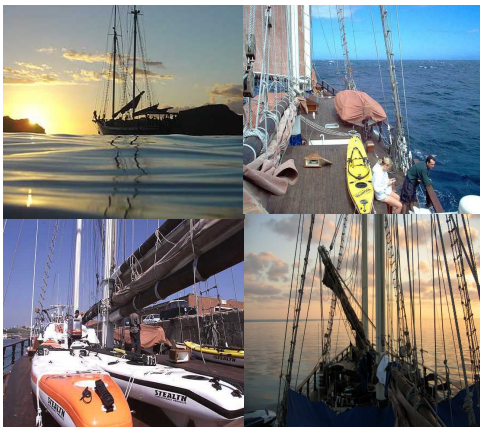


Mieke is our 110ft Grand Bank Schooner, constructed of steel and commissioned in March 1998, she has sailed the harsh sub-zero sea conditions of the Southern Atlantic. As such, she has some of the most tested and robust state-of-the-art safety and navigational equipment on any yacht in commission world-wide and has proved herself to be safe, stable and elegant in all weather conditions.

Her skipper, Willie, has commanded her professionally since she was built and has navigated her through some fierce cape storms, up to 600 nautical miles off the Southern Atlantic, Indian Ocean and the Namibian coastline. Her design has allowed her to be at sea for up to three months at a time and has handled all severe weather conditions proudly without any problems.



Today after undergoing a half a million USD dollar refit she has been converted into one of the most luxury live-aboard charter vessels in the Indian Ocean. Approximately 20 tonnes of African hardwoods have been fitted into her decks, lounges and cabins. All fittings are authentic and designed for ease of use and for the ultimate relaxing cruise adventure. She has six ensuite air-conditioned double berth, cabins with all linen and towels provided and built around a central spacious lounge, dining room and bar. The lounge has a wide-screen TV/DVD player with a wide variety of movies. CD players are in all cabins and guests can borrow CDs from the lounge library. A well-stocked library of books on a variety of fiction and non-fiction subjects is also available as are a variety of board games.



Meals are taken in the lounge dining area or on the outside entertainment area on the aft of the vessel by the wheel. Lunch and dinner meals will generally consist of fresh fish caught along the way or dived for at the various stopover points. A specialist onboard chef who used to cook for the British Royal Family is renowned for his imaginative cuisine. Special requests for dietary requirements will also be catered for if requested in advance (at the time of initial booking). Bottled water, soft drinks, beer and wine are available free of charge. Spirits and cocktails are available and a tab will be run for these items.

Mieke also has excellent frozen storage facilities. A 10T refrigerated hold is operational and can store any trophy fish awaiting taxidermy. Our icemaker can produce 4Ton daily and will definitely keep your drinks cool! There is also ample storage space for your own fishing/diving gear.



Life on Board

Mieke is like a floating resort. She is equipped with a wealth of toys to keep you occupied when you're not diving.

2 Fibreglass fishing boats, each with a 60HP motor (suitable for up to 10 people)

4 sea-going paddle kayaks for paddling or fishing / 6 Daiwa deep-sea game-fishing rods and reels as well as other light tackle / Surf boards / Water skis / Windsurfs

We stock six Daiwa big game deep-sea fishing rigs and other light tackle. The Rapala lures for these rods are quite costly and as such, lost Rapalas will be charged for. Alternatively, guests are encouraged to bring their own lures.



Diving

Individuals are required to have a PADI (or international equivalent) certificate if they wish to dive. This is in line with international safety and insurance regulations.

15 10l scuba tanks with the following accessories available:

Buoyancy jackets / Regulators / Dive computers / Masks, fins, wetsuits, weight belts

Bauer compressors for refilling of scuba tanks / (8 tanks per hour)

/ Spare fins, masks, snorkels and spearguns for spearfishing /

For ease of use, scuba divers are encouraged to bring their own BC jackets, regulators, dive computers and wetsuits. If you are unable to bring any of these items, we do stock spare equipment.

Similarly, spearfishermen are encouraged to bring their own diving gear and spearguns. Spare spearguns are available



Included

Full board accommodation (3 meals per day) onboard Yacht, drinks (except for alcoholic drinks - we would be happy to run a tab). We are fully equipped to cater for all recreational requirements. We have equipment for all the following activities: scuba diving (all Divetek gear), spearfishing, snorkeling, deep sea game fishing, water-skiing, sea-kayaking, surfing, sand boarding, wind surfing, flyfishing and island hopping. Mieke is also equipped with two 60hp tender boats on board.

All dives and limitless use of recreational equipment are also included.

Individuals are required to have a PADI (or international equivalent) certificate if they wish to dive. This is in line with international safety and insurance regulations.

For ease of use, scuba divers are encouraged to bring their own BC jackets, regulators, dive computers and wetsuits. If you are unable to bring any of these items, we do stock spare equipment. Similarly, spearfishermen are encouraged to bring their own diving gear and spearguns. Spare spearguns are available

We stock six Daiwa big game deep-sea fishing rigs and other light tackle. The Rapala lures for these rods are quite costly and as such, lost Rapalas will be charged for. Alternatively, guests are encouraged to bring their own lures.

